

co

CleanMyMac X

Disfruta de un Mac X v y protegido. Descárgal

Home (/) | Browse Categories (Category.aspx) | Pharma Suppliers (support.aspx) | Herbal Medicine (/herbal/AlternateMedicine.aspx)

Challenges and Quizes (/quiz/)

Search (/search.aspx)

Search DrugInfoSys

Loxoprofen (Sodium)

Overview

Loxoprofen (Sodium) is NSAID (non-steroidal antiinflammatory drug) and a prodrug of a propionic acid derivative. It has antiinflammatory and antipyretic properties. Loxoprofen (Sodium) is optically active and marketed as racemic mixture. Loxoprofen (Sodium) is not available in any combination preparations. Loxoprofen (Sodium) is administered orally.

Categories

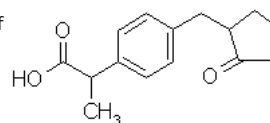
- 2 Analgesics, antipyretics, NSAIDs, antigout, and antirheumatics
 - 2.1 Non-opioid analgesics
 - 2.1.3 Non steroidal anti-inflammatory drugs (NSAIDs) (CategoryDrugs.aspx?cat=2.1.3)

Page headings

Overview	Primary Characteristics
Indications	Pharmacokinetics
Contraindications	Drug Interactions
Side Effects	Dosage
High Risk Groups	Warning / Precautions
Storage Conditions	Interference in Pathology
Brands of Loxoprofen (Sodium)	Manufacturers of Loxoprofen (Sodium)

Primary Characterstics

It is of Synthetic origin and belongs to Propionic acid. It belongs to Cyclo-oxygenase inhibitor pharmacological group on the basis of mechanism of action and also classified in Analgesics and Anti-inflammatory Agents pharmacological group. The Molecular Weight of Loxoprofen (Sodium) is 304.30.



Its pKa is 4.2.

Indications

Loxoprofen (Sodium) is primarily indicated in conditions like Cervical spondylosis (Disease.aspx?Code=2846), Lumbago (Disease.aspx?Code=1157), Osteoarthritis (Disease.aspx?Code=303), Pain (Disease.aspx?Code=111), Periarthritis (Disease.aspx?Code=1158), Rheumatoid arthritis (Disease.aspx?Code=133), Toothache (Disease.aspx?Code=1100).

[Back to top](#)

Pharmacokinetics

Volume of distribution is found to be 7.6 litre and plasma protien binding is 97.7%. and metabolism is reported Hepatic glucuvonidation. Renal Excretion accounts for 50% and plasma half life is 75 mins.

[Back to top](#)

Arthritis Foods To Avoid

Limit these foods to de arthritis pain and inflammation.



Sign in or Sign up

 Remember me - forgot password

CleanMyMac

Un Mac comme neuf. Tr outils pour optimiser v Mac, dans une seule



Suggested Pages

Contraindications

Loxoprofen (Sodium) is contraindicated in conditions like Peptic ulcer (Disease.aspx?code=117&query=Peptic+ulcer), Haematological disorders (Disease.aspx?code=1065&query=Haematological+disorders), Hypersensitivity (Disease.aspx?code=1910&query=Hypersensitivity).

[Back to top](#)

Drug Interactions

No data regarding the interactions of Loxoprofen (Sodium) was found.

[Back to top](#)

Side Effects

The severe or irreversible adverse effects of Loxoprofen (Sodium), which give rise to further complications include Anemia, Eosinophilia, Hypersensitivity reactions, Anemia, Leukemia.

The symptomatic adverse reactions produced by Loxoprofen (Sodium) are more or less tolerable and if they become severe, they can be treated symptomatically, these include Anorexia, Abdominal pain, Rashes, Urticaria, Indigestion, Itching, StomatitisX, Heart burn, Increased intracranial pressure.

[Back to top](#)

Dosage

Loxoprofen (Sodium)'s dosage details are as follows:

Dose	Single Dose	Frequency	Route	Instructions
Adult Dosage				
60 to 120 mg	90 (90)	8 hourly	PO	As Required
Paedriatic Dosage (20kg)				
				Not recommended for this age group
Neonatal Dosage (3kg)				
				Not recommended in this age group

High Risk Groups

Drug should not be given to Paediatrics, Pregnant Mothers, patients suffering from Kidney dysfunction, patients suffering from Liver Malfunction, and Neonates.

If prescribing authority justifies the benefits of the drug against the possible damages he/she should reevaluate them and consult the reference material and previous studies.

[Back to top](#)

Warning / Precautions

Loxoprofen may mask the usual sings and symptoms of injection. Therefore this drug should be used with an appropriate antibacterial agent for infections inflammation. Close observation and careful administration is also needed under this condition.

[Back to top](#)

Storage Conditions

Tab

[Back to top](#)

Interference in Pathology

- Increased Alkaline Phosphatase Levels
- Elevations of GOTand GPT

[Back to top](#)

Brands / Trade Names of Loxoprofen (Sodium)

Click on the desired strength of the dosage form to view its available brands.

Single Ingredient

Tabs: 60 mg ([AvailableBrands.aspx?query=60mg&form=Tabs&drugCode=909&drugName=Loxoprofen \(Sodium\)&Ing=>1](#)),
 68.1 mg ([AvailableBrands.aspx?query=68.1mg&form=Tabs&drugCode=909&drugName=Loxoprofen \(Sodium\)&Ing=>1](#)),

Multi ingredient

Tabs: 15 mg ([AvailableBrands.aspx?query=15mg&form=Tabs&drugCode=909&drugName=Loxoprofen \(Sodium\)&Ing=>1](#)),

[Back to top](#)

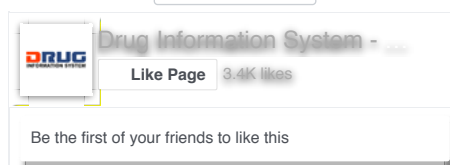
Manufacturers of Loxoprofen (Sodium) in Pakistan

Hilton (CompanySimple.aspx?Code=83&type=1&drugCode=909)	Macter (CompanySimple.aspx?Code=110&type=1&drugCode=909)
Medisure (CompanySimple.aspx?Code=121&type=1&drugCode=909)	Wilshire (CompanySimple.aspx?Code=216&type=1&drugCode=909)

[Back to top](#)

Previous Drug Generic (<http://www.druginfosys.com/drug.aspx?drugcode=908&type=1>) -
 Next Drug Generic (<http://www.druginfosys.com/drug.aspx?drugcode=910&type=1>)

[Like](#) [Share](#)
[Save to Facebook](#)



0 Comments

Sort by [Oldest](#)

Add a comment...

[Facebook Comments plugin](#)

About Us



Disclaimer

Information provided on this Web site is neither intended nor implied to be a substitute for professional medical advice. You should not use this information on this web site or the information on links from this site to diagnose or treat a health problem or disease without consulting with a qualified healthcare provider. Pharma Professional Services advises you to always seek the advice of your physician or other qualified health provider prior to starting any new treatment or with any questions you may have regarding a medical condition. You should check with your physician/health care provider before using any of the means or methods presented on this site. If you undertake any treatment methods displayed on this site without such supervision, you are solely and entirely responsible for it's outcome. Pharma Professional Services nor anyone connected with this site cannot be held responsible for your actions nor any conditions resulting thereof.

Support

User Feedback ([FeedBackForm.aspx](#))
 Advertise With Us (<http://phaps.com/ODIS/advertise-with-us>)
 Pharmaceutical Companies ([PharmaCompanies.aspx](#))
 Content Submissions ([submitContent.aspx](#))
 Contact Us ([ContactUs.aspx](#))