

Rituximab in neurological disease: principles, evidence and practice

Daniel H Whittam,¹ Emma C Tallantyre,^{2,3} Stephen Jolles,^{4,5} Saif Huda,¹ Robert J Moots,⁶ Ho Jin Kim,⁷ Neil P Robertson,^{2,3} Bruce A C Cree,⁸ Anu Jacob^{1,9}

► Additional material is published online only. To view please visit the journal online (<http://dx.doi.org/10.1136/practneurol-2018-001899>).

For numbered affiliations see end of article.

Correspondence to

Dr Anu Jacob, The Walton Centre NHS Foundation Trust, Lower Ln, Liverpool L9 7LJ, UK; anu.jacob@thewaltoncentre.nhs.uk

Accepted 20 August 2018
Published Online First
29 November 2018



Listen to Podcast
pn.bmj.com



© Author(s) (or their employer(s)) 2018. No commercial re-use. See rights and permissions. Published by BMJ.

To cite: Whittam DH, Tallantyre EC, Jolles S, *et al.* *Pract Neurol* 2019;**19**:5–20.

ABSTRACT

Rituximab is a widely used B-cell-depleting monoclonal antibody. It is unlicensed for use in neurological disorders and there are no treatment guidelines. However, as a rapidly acting, targeted therapy with growing evidence of efficacy and tolerability in several neuroinflammatory disorders, it is an attractive alternative to conventional immunomodulatory medications. This practical review aims to explain the basic principles of B-cell depletion with therapeutic monoclonal antibodies. We present the evidence for using rituximab in neurological diseases, and describe the practical aspects of prescribing, including dosing, monitoring, safety, treatment failure and its use in special circumstances such as coexisting viral hepatitis, pregnancy and lactation. We provide an administration guide, checklist and patient information leaflet, which can be adapted for local use. Finally, we review the safety data of rituximab and ocrelizumab (a newer and recently licensed B-cell-depleting therapy for multiple sclerosis) and suggest monitoring and risk reduction strategies.

INTRODUCTION

This article covers both the practical aspects of prescribing rituximab and some of the basic principles of B-cell depletion with monoclonal antibodies, which are relevant to neurologists. Those seeking an administration guide for rituximab, or a rapid overview of the indications and supporting evidence, expected side-effects or specific prescribing circumstances, should skip to the relevant tables towards the end of the article. We have provided an example of a patient information sheet and an administration checklist, which are available as online supplementary material 1 and 2.

B-cell function and role in neurological disease

B-cells secrete antibodies, present antigen and regulate the immune response by producing proinflammatory and

anti-inflammatory cytokines. Only 2.5% of the total B-cell population is within the peripheral circulation, made up predominantly of naïve mature B-cells and memory B-cells; the rest are in bone marrow and lymphoid tissue.¹ Antibodies may be of any immunoglobulin class (G, M, A, D or E) or subclass (eg, IgG1–4), each of which have differing functions. Examples of disorders in which autoantibodies are almost certainly pathogenic include myasthenia gravis with acetylcholine receptor (AChR) antibodies (usually IgG1 or IgG3) or muscle-specific tyrosine kinase (MuSK) antibodies (IgG4), neuromyelitis optica spectrum disorders (NMOSD) with antibodies against the aquaporin-4 water channel (mainly IgG1), and autoimmune encephalitis with antibodies to the N-methyl-D-aspartate receptor (NMDAR) (mainly IgG1) or leucine-rich glioma inactivated-1 (LGI1) (mainly IgG4). B-cells also play a crucial role in multiple sclerosis (MS) pathogenesis, evidenced by cerebrospinal fluid oligoclonal IgG bands, meningeal-based ectopic B-cell follicles adjacent to areas of focal cortical demyelination² and the efficacy of B-cell-depleting therapies to treat MS.

B-cell surface markers

CD19 and CD20 are B-cell transmembrane proteins. They can be used as targets for drugs and as surface markers (in flow cytometry to quantify B-cell populations and assess treatment response). CD19 is expressed more widely throughout B-cell development than CD20 but both markers are absent on long-lived plasma cells (**figure 1**). In healthy adults CD19⁺ or CD20⁺ B-cells comprise 12%–22% of the total circulating lymphocyte population (absolute reference range is 50–500 cells/mm³).

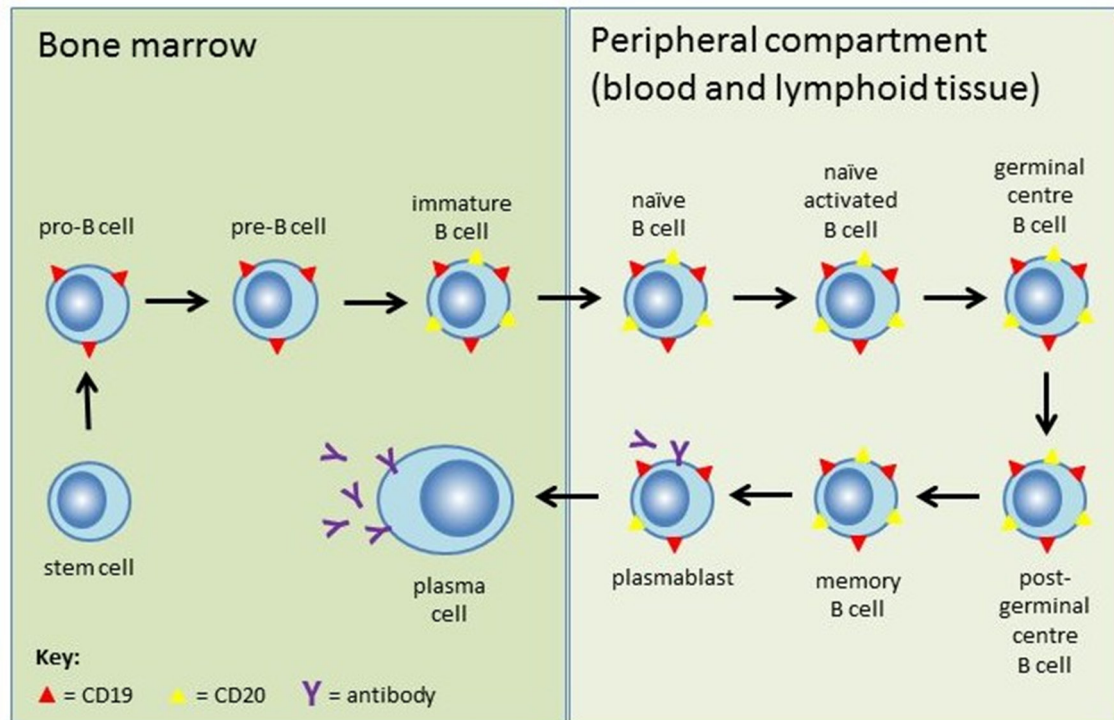


Figure 1 Stages of B-cell development and expression of B-cell surface markers. Pluripotent haematopoietic stem cells develop into naïve mature B cells in the bone marrow. They then migrate to secondary lymphoid organs (spleen and lymph nodes), where they are activated by antigens in circulating lymph and mature into memory B-cells or plasmablasts. Memory B-cells either circulate in the bloodstream or remain in germinal centres, while plasmablasts mature to antibody-secreting plasma cells that reside in the bone marrow or lymphoid tissue. CD20 (yellow triangles) appears at the immature B-cell stage and is lost at the plasmablast stage. Most plasmablasts and nearly all plasma cells (which produce the vast majority of antibodies) do not express CD20. CD19 (red triangles) has wider expression from the pro-B-cell stage through to plasmablasts and a proportion of plasma cells, but not terminally differentiated plasma cells.

CD27 is expressed by memory B-cells and certain other immune cell types. The combination of CD19 and CD27 is specific to memory B-cells. This subset of long-lived B-cells, capable of rapid differentiation into high-affinity plasma cells following repeated antigen exposure, may be an important target in the treatment of autoimmune neurological disease.^{3,4}

B-cell-depleting monoclonal antibodies

Monoclonal antibodies are immunoglobulins produced by a single clone of hybridoma cells (antigen-specific plasma cells fused with myeloma cells). They bind via their two identical fragment antigen binding (Fab) domains to a single epitope and activate the immune system via their fragment crystallisable (Fc) domain. Cells expressing that epitope are killed, therefore allowing highly targeted immunotherapy for a variety of neoplastic and autoimmune diseases. Available B-cell-depleting monoclonal antibodies have Fab domains targeted to CD20 or CD19, and so selectively deplete the circulating B-cell population, with the exception of mature antibody-secreting plasma cells. [figure 2](#) shows those used in treating neuroinflammatory diseases.

Rituximab was the first anti-CD20 monoclonal antibody to be approved (1997) for treating B-cell

lymphomas. It has since been licensed to treat refractory rheumatoid arthritis and antineutrophil cytoplasmic antibody (ANCA)-associated vasculitis. Unlicensed use for neuroinflammatory disease is growing.

Rituximab is a first-generation, chimeric monoclonal antibody made by fusing a murine (rodent) Fab domain with a human Fc domain ('chimeric' is from the mythological *Chimera*—a monstrous fire-breathing hybrid creature, part lion and part goat). The Fc domain activates various immune mechanisms, as shown in [figure 3](#). Ninety per cent of circulating B-cells are killed within 3 days of the first infusion of rituximab. Reduction of pathogenic antibody titres correlates with efficacy in some disorders. However, rituximab probably affects the whole spectrum of B-cell function, and secondary changes in T-cell function, such as induction of immunoregulatory T cells, may be important in some neuroinflammatory disorders. Sparing of CD20^{negative} long-lived plasma cells is hoped to preserve lasting humoral immunity.

Compared with first-generation monoclonal antibodies, second-generation monoclonal antibodies have improved Fab domains, often humanised or fully human, which improve B-cell killing and tolerability ([figure 2](#)). Ocrelizumab (humanised) was recently

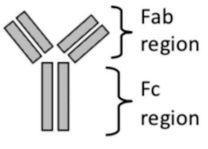
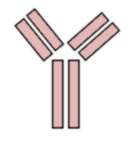
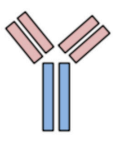
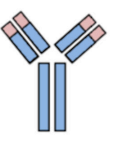

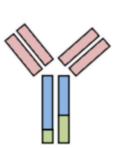
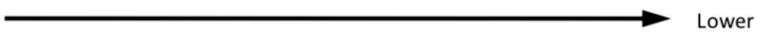
| Generation | 1 st Generation | | 2 nd Generation | | 3 rd Generation |
|---|--|---|---|--|--|
| mAb Structure  | Murine (100% rodent)  Suffix: -omab | Chimeric (65% human)  Suffix: -ximab | Humanised (>90% human)  Suffix: -zumab | Fully human  Suffix: -umab | Modified Fc region (chimeric or humanised)  |
| Immunogenicity | Higher  Lower | | | | |
| Anti-CD20 mAbs | <i>Not in clinical use due to short half-life, poor efficacy and high risk of adverse reactions</i> | Rituximab Biosimilars: Truxima Rixathon <i>Unlicensed use in neurology (table 2)</i> | Ocrelizumab <i>Licensed for relapsing and primary progressive MS</i> | Ofatumumab <i>Currently in phase III clinical trials for MS</i> | Ublituximab (TG-1101) (chimeric) <i>Currently in phase III clinical trials for MS</i> |
| Anti-CD19 mAbs | | | | | Inebilizumab (MEDI-551) (humanised) <i>Currently in clinical trials for MS and NMOSD</i> |

Figure 2 B-cell-depleting monoclonal antibodies in neurology. mAb, monoclonal antibody; MS, multiple sclerosis; NMOSD, neuromyelitis optica spectrum disorder.

approved to treat relapsing and progressive MS. Ofatumumab, a fully human monoclonal antibody given by once monthly subcutaneous injection, is in clinical trials. Third-generation monoclonal antibodies have been further engineered to improve their Fc-mediated immune functions or half-life. Ublituximab (TG-1101), a rapidly infusible chimeric glycoengineered monoclonal antibody, is also being trialled in MS currently.

Anti-CD19 B-cell-depleting therapies may be more effective (and potentially have higher risks) than anti-CD20 therapies due to the broader expression of CD19 throughout B-cell development, including the plasmablast phase (figure 1). Inebilizumab (MEDI-551) is in a phase 3 trial in NMOSD.⁵

Biosimilars

Most monoclonal antibodies are costly. However, once the original drug patent expires, cheaper, copy versions—'biosimilars'—become available. Competing companies do not have access to the original molecular clone, cell bank or exact manufacturing process, which may result in slight differences to these complex molecular structures. Therefore, biosimilars are not truly

'generic'. To gain a licence, biosimilars must be shown to be highly similar in structure, purity and biological activity to the original monoclonal antibody; however, it is not necessary to repeat clinical trials for each indication. Rituximab's patent expired in 2016 and the European Medicines Agency (EMA) has approved two biosimilars, Truxima and Rixathon. The dosing and administration protocols are identical. British National Formulary prices are currently £1746 for MabThera 1 g (the original form of rituximab) vs £1572 for Truxima or Rixathon.⁶ However, prices to National Health Service (NHS) hospitals vary substantially according to regional contracts and discussion with the hospital pharmacy department is advised. Patients should be informed of the switch and monitored to ensure that tolerability and side effects remain unchanged.

Indications and evidence for rituximab in neurology

An understanding of the evidence for rituximab in neuroinflammatory disorders (see table 1 for a briefer summary) should inform off-license prescribing.

Multiple sclerosis

With a choice of licensed disease-modifying therapies supported by phase III randomised controlled trials,

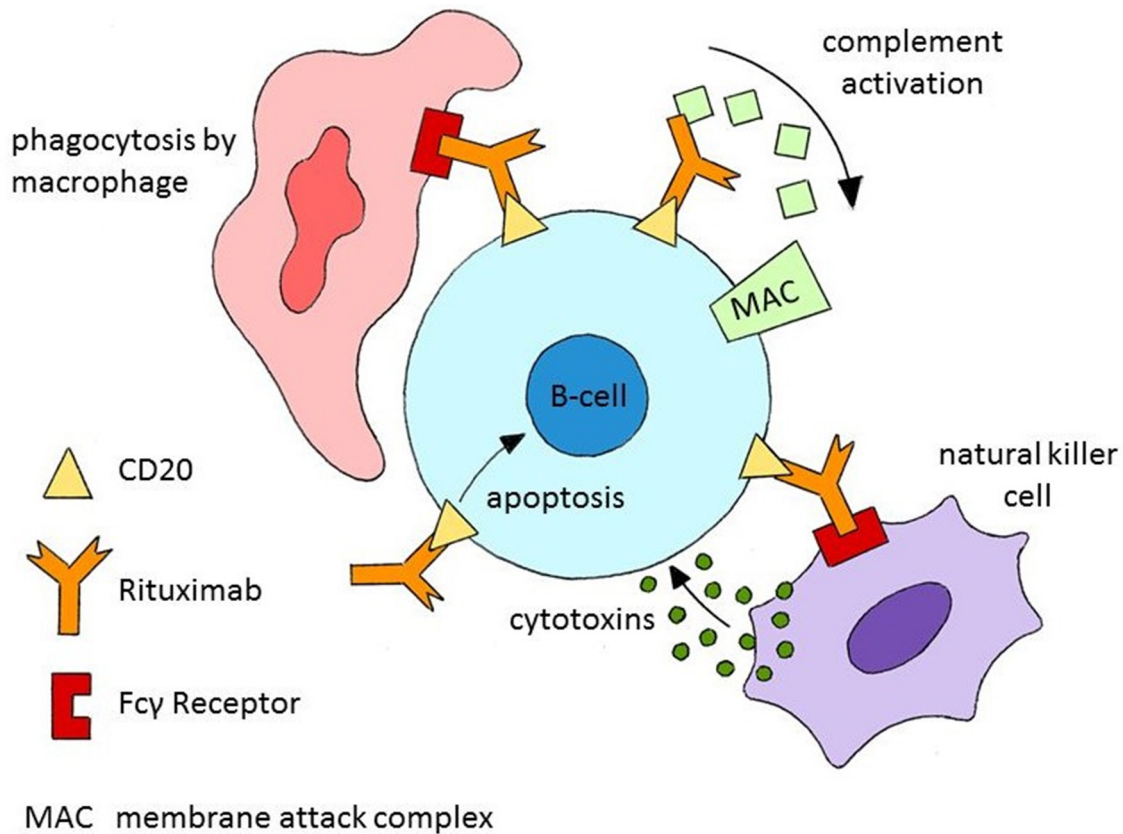


Figure 3 Rituximab depletes CD20⁺ B-cells via three different mechanisms: (1) antibody-dependent cellular cytotoxicity mediated by Fc γ receptors on the surface of natural killer cells, granulocytes and macrophages; (2) complement-dependent cytotoxicity; (3) induction of apoptosis.

use of rituximab in the UK for MS is rare. However, there is evidence suggesting efficacy, and it may be an option in occasional cases (especially if licensed comorbidities, such as active rheumatoid arthritis, facilitate funding). Phase I and II trials of rituximab in relapsing–remitting MS met their primary endpoints.^{7–9} A large 96-week multicentre randomised controlled trial in primary progressive MS failed to demonstrate a delay to confirmed disease progression, but subgroup analysis showed a benefit in younger patients, particularly with inflammatory lesions.¹⁰ Trials in MS then ceased, probably due to the impending expiration of rituximab’s patent and the emergence of newer B-cell-depleting therapies from the same manufacturer. Sweden is the biggest off-licence prescriber of rituximab for all forms of MS and has published class IV evidence of safety and efficacy in a large multicentre cohort (n=822).¹¹ The dose used is 500–1000 mg 6–12 monthly. A recent real-world retrospective comparative study showed efficacy in relapsing–remitting MS comparable to natalizumab and fingolimod, and significantly better than injectable disease-modifying therapies and dimethyl fumarate. Rituximab was superior to all drugs in terms of discontinuation rate.¹² Although this is relatively low-quality evidence, there is a clear indication that rituximab is an effective treatment for MS, which would be expected in light

of the recent positive randomised controlled trials for ocrelizumab.

Neuromyelitis optica spectrum disorders

No immunosuppressive therapy in NMOSD is yet validated by a high-quality randomised controlled trial, though there are three such trials ongoing. Rituximab use is supported by numerous, predominantly retrospective, case series amounting to over 400 patients and showing consistent reductions in annualised relapse rate. There are various dosing strategies in use, which we discuss later in ‘dosing and monitoring’. A recent meta-analysis calculated a mean reduction in relapse rate of 79%.¹³ As such, rituximab currently has the best evidence of any immunotherapy used in NMOSD, but due to its relatively high cost, it remains second-line therapy for patients in the UK. It is available for patients who have relapsed despite adequate treatment with azathioprine or mycophenolate mofetil combined with low-dose prednisolone.¹⁴ Funding can be obtained through the Specialised NHS England Service for NMOSD (www.nmouk.nhs.uk).

Autoimmune encephalitis

As most autoimmune encephalitis is monophasic, the role of rituximab is usually as a second-line acute therapy (single course) to maximise neurological

Table 1 Indications for rituximab in neurology

| Disorder | Indication | Summary of best evidence | UK usage and funding |
|---|--|---|---|
| Relapsing–remitting multiple sclerosis | Maintenance therapy for relapse prevention | Positive phase I and II trials and large real-world retrospective studies in Sweden suggest good efficacy, safety and tolerability. ^{7–12} | Rarely used in UK as there are several licensed disease-modifying therapies. No established funding pathway. |
| Neuromyelitis optica spectrum disorders | Maintenance therapy for relapse prevention | Predominantly retrospective case series (of more than 400 patients in total), which consistently show a marked benefit. ¹³ | Second-line therapy for patients that relapse despite adequate treatment with azathioprine or mycophenolate mofetil in combination with low-dose prednisolone. ¹⁴ Funded through the UK NMO Service (www.nmouk.nhs.uk). |
| Autoimmune encephalitis (other than anti-NMDAR) | Acute therapy | One large retrospective study and several case reports suggest a benefit but there are no comparative studies of individual immunotherapies. ¹⁵ | Consider if there is inadequate response to first-line therapy. Funding is via IPFR to NHSE or through local trust resources. |
| Anti-NMDAR encephalitis | Acute therapy | Three retrospective studies suggest a benefit but there are no comparative studies of individual immunotherapies. ^{15–17} | Commissioned by NHSE as second-line therapy if there is inadequate response to corticosteroids, plasma exchange and intravenous immunoglobulin by 4 weeks from first-line treatment initiation or by 6 weeks from symptom onset. ¹⁸ |
| Primary angiitis of the CNS | Acute therapy | Small case series (approximately 10 patients in total). ^{22–24} | Consider if there is inadequate response to corticosteroids and cyclophosphamide. Funding is via IPFR to NHSE or through local trust resources. |
| ANCA-associated vasculitis | Remission induction and relapsing disease | Two randomised controlled trials have shown non-inferiority to cyclophosphamide for remission induction. ^{26 27} | Licensed and recommended by NICE in combination with corticosteroids as an option for inducing remission of severe disease, when cyclophosphamide has failed, is contraindicated or the patient has not completed their family. ²⁸ |
| Stiff-person syndrome | Treatment of refractory disease | Case reports suggest a possible benefit but a single small randomised controlled trial was negative. ^{29–32} | May consider if there is inadequate response to first-line therapy. Funding is via IPFR to NHSE or through local trust resources. |
| Immune-mediated peripheral neuropathies | Treatment of refractory disease | Mostly small retrospective series in which benefits are modest. ^{34–50} An uncommon subset of patients with CIDP with antibodies to paranodal proteins may benefit more so (case reports). ^{37 38} Two small randomised controlled trials in anti-MAG neuropathy showed marginal benefits. ^{45 46} | NHSE will not routinely commission rituximab for refractory CIDP, multifocal motor neuropathy, non-systemic vasculitic neuropathy or anti-MAG neuropathy. ³³ May consider in exceptional circumstances, particularly in IgG4-mediated disease. Funding is via IPFR to NHSE or through local trust resources. |
| Myasthenia gravis | Treatment of refractory disease | Mostly small retrospective case series. Evidence of benefit is much greater in MuSK-associated myasthenia gravis than AChR-associated myasthenia gravis (for which clinical trials are ongoing). ^{51–55} | Consider if there is inadequate response to first-line therapy, particularly in MuSK-associated myasthenia gravis. Funding is via IPFR to NHSE or through local trust resources. |

ANCA, antineutrophil cytoplasmic antibody; CIDP, chronic inflammatory demyelinating polyradiculoneuropathy; CNS, central nervous system; IPFR, individual patient funding request; MAG, myelin-associated glycoprotein; NHSE, National Health Service England; NICE, National Institute for Health and Care Excellence; NMDAR, N-methyl-D-aspartate receptor.

recovery, rather than as a long-term maintenance treatment (as with MS/NMOSD). The most commonly used dosing regimen is 375 mg/m² weekly for four doses. Limited retrospective evidence supports its use when there has been an inadequate response to intravenous corticosteroids, plasma exchange and intravenous immunoglobulin. There is no evidence to compare the effects of individual immunotherapies in autoimmune encephalitis, so it is not possible to ascribe therapeutic benefits solely to rituximab. However, its rapid onset of action, established efficacy in other antibody-mediated diseases and good safety profile with short-term use make it an attractive option. The major study supporting rituximab use in autoimmune

encephalitis is a retrospective comparison of outcomes in 161 patients. Functional improvement measured by modified Rankin Scale occurred more frequently in the rituximab-treated group, regardless of antibody status).¹⁵

There is additional evidence specifically for anti-NMDAR encephalitis, the most common subtype of autoimmune encephalitis. A large prospective cohort study (n=577) found that 78% of patients who failed first-line and received second-line immunotherapy (rituximab and/or cyclophosphamide) had a good outcome at 24 months, compared with 55% of patients who failed first-line and did not receive second-line therapy.¹⁶ A study of rituximab

Part 1: Planning a single or first treatment course**Exclude
contra-indications:**

1. Hypersensitivity to rituximab or murine proteins.
2. Active, severe infection (e.g. TB, sepsis, opportunistic infections).
3. Severe immunocompromised state*.
4. Severe heart failure or uncontrolled cardiac disease.

* CD3, CD4, CD8, CD19, CD20 and CD56 cell counts can be assessed and discussed with immunology when concerned.

Mandatory pre-treatment work-up:

- **Emergency and elective use** (eg, anti-NMDAR encephalitis)

Informed written consent for unlicensed administration.

Patient information sheet ([supplementary online material 1](#)).

Blood tests:

- Full blood count.
- Liver function tests.
- Immunoglobulin levels
 - subnormal levels do not preclude treatment.
- HBV serology (HBV surface antigen and core antibody)
 - if either is positive, seek expert opinion and start anti-viral prophylaxis before rituximab treatment.
- HCV and HIV serology.

Additional pre-treatment work-up:

- **If elective maintenance therapy planned** (eg, NMOSD)

- Discuss contraception.
- Take immunisation history and give necessary vaccines*
 - give non-live vaccines >4 weeks, live vaccines >8 weeks prior to first infusion.
- Give pneumococcal vaccine to all patients if possible.
- Test for latent TB in high-risk groups (*QuantiFERON-TB Gold* or tuberculin skin testing, followed by chest radiograph if indicated).
- VZV serology if there is no history of primary infection.

* In uncertain cases, antibody titres could be obtained for important vaccines.

Part 2: Infusion day (see infusion checklist, [supplementary online material 2](#))**On the day of
infusions:**

1. Withhold morning antihypertensive medications if possible.
2. Verify consent.
3. Clinical assessment to exclude active infection.
4. Pregnancy test if appropriate.

Administration:

1000 mg on day 1 and day 15

or

375 mg/m² body surface area weekly for 4 weeks.

Give intravenous methylprednisolone 100 mg prior to each infusion.

Part 3: Re-treatment (usually for relapsing disease)**Option 1
UK NMO Service practice
adapted from Greenberg *et al* [63]**

Monitor circulating B-cell count (CD19⁺ cells) monthly.
Retreat with single 1000 mg infusion when it rises above 1%*.

* Consider tighter re-treatment threshold (0.05%) if breakthrough disease occurs.

**Option 2
Developed for NMOSD
Kim *et al* [4 67]**

Monitor memory B-cell population (CD19⁺/CD27⁺ cells*) six weekly in first year, eight weekly in second year, 10 weekly thereafter. Retreat with 375 mg/m² when it rises above 0.05% in the first 2 years and 0.1% thereafter.

* Very small cell population – discuss with laboratory regarding feasibility and cost

**Option 3
If B-cell monitoring is not possible**

Repeat either single infusions or treatment courses at regular 6 month intervals.

Work-up prior to subsequent infusions:

- Baseline full blood count.
- Check immunoglobulin levels if there is history of recurrent infection, or in high risk patients for secondary antibody deficiency (including low baseline IgG, previous immunosuppression, combination therapy).
- Consider further investigations from part 1 if clinically indicated (eg, risk of exposure to viral hepatitis).

Figure 4 Rituximab administration guide. *Italicised points reflect our personal practice rather than established recommendations.* HBV, hepatitis B virus; HCV, hepatitis C virus; HIV, human immunodeficiency virus; NMDAR, N-methyl-D-aspartate receptor; NMOSD, neuromyelitis optica spectrum disorders; TB, tuberculosis; VZV, varicella zoster virus.

in paediatric neuroinflammatory disease included 44 patients with anti-NMDAR encephalitis. Ninety-seven per cent of these patients had some benefit from second-line rituximab therapy, especially when given early.¹⁷ In light of these studies, a UK clinical commissioning policy, published in March 2018, agreed to fund rituximab routinely for adults and children with anti-NMDAR encephalitis who have responded inadequately to first-line therapy (failure to improve by two or more points on the modified Rankin Scale by 4 weeks from starting first-line treatment or by 6 weeks from symptom onset).¹⁸

Evidence for autoimmune encephalitis with less common antibodies is limited to case reports and small case series, which are frequently confounded by coadministration of multiple immunotherapies. For example, there are two case series reporting outcomes after rituximab in seven patients with anti-LGI1 encephalitis. Three patients (43%) had good outcomes and one patient had a possible response.^{19 20} The emerging theme in autoimmune encephalitis, irrespective of antibody status, is that early and aggressive immunotherapy is beneficial. It seems plausible that rituximab, or similar B-cell-depleting therapies, will increasingly form part of immunotherapy algorithms.

Primary angiitis of the central nervous system

High-dose corticosteroids with or without cyclophosphamide form the mainstay of treatment for this rare condition.²¹ Favourable outcomes with rituximab are reported in two small case series, in which 2/2 and 6/7 patients appeared to respond.^{22 23} There are additional case reports describing its use.²⁴

ANCA-associated vasculitis

ANCA-associated vasculitis occasionally presents to the neurologist, for example, with mononeuritis multiplex, but is likely to be comanaged with other vasculitis experts. Rituximab is licensed and recommended by recent European Guidelines for organ or life-threatening disease.²⁵ This follows two randomised controlled trials, in which rituximab (375 mg/m² weekly for four doses) was non-inferior to cyclophosphamide for inducing remission.^{26 27} It may be more effective than cyclophosphamide for relapsing disease.²⁷ NHS England will fund rituximab where cyclophosphamide has failed or is contraindicated (eg, patients who wish to preserve their reproductive potential).²⁸

Stiff-person syndrome

Although some case reports suggested a possible benefit of rituximab for stiff-person syndrome,^{29–31} a single small double-blind randomised controlled trial (n=24) found no significant changes in any outcome measures after 6 months of rituximab treatment.³²

Immune-mediated peripheral neuropathies

A UK clinical commissioning policy, published in December 2017, reviewed the evidence for rituximab

to treat chronic inflammatory demyelinating polyradiculoneuropathy (CIDP), multifocal motor neuropathy, non-systemic vasculitic neuropathy and IgM paraprotein-associated demyelinating neuropathy with antibodies to myelin-associated glycoprotein (anti-MAG neuropathy). It concluded that there is insufficient evidence to make rituximab routinely available for these disorders.³³ However, there may be circumstances in which rituximab could help, as discussed below. Most studies have used 375 mg/m² weekly for 4 weeks.

Rituximab has been used in CIDP following inadequate response to conventional therapy (corticosteroids, intravenous immunoglobulin and plasma exchange). A Cochrane review (2013) identified 17 published CIDP cases treated with rituximab, of which 12 (71%) improved after treatment.³⁴ The largest series has 10 patients, of whom six (60%) improved.³⁵ In a multicentre retrospective analysis, 18/110 (16.4%) refractory CIDP cases received rituximab. The response rate (improvement in modified Rankin Scale score by at least 1 point) was 33%—comparable to azathioprine or cyclophosphamide.³⁶ There was a recent report of marked improvement following rituximab in patients with CIDP with IgG4 antibodies against paranodal proteins (anti-neurofascin 155/CNTN1). These cases account for less than 10% of all patients with CIDP but they are often relatively resistant to intravenous immunoglobulin and corticosteroids, highlighting the importance of serological testing and suggesting a potential role for rituximab in a subset of patients with CIDP that needs further exploration.^{37 38}

Data for rituximab in multifocal motor neuropathy are limited to small case series and are conflicting. Intravenous immunoglobulin is the mainstay of therapy. When rituximab was used as monotherapy in seven patients in two separate observational studies, all showed some improvement in muscle strength.^{39 40} When given as an adjunct to intravenous immunoglobulin in a small open-label trial (n=6), there was no significant change in motor function or required dose.⁴¹ In two further cases, one patient reduced and one increased their intravenous immunoglobulin requirement.⁴²

Non-systemic vasculitic neuropathy is a peripheral nerve vasculitis in the absence of clinical or laboratory evidence of systemic vasculitis. The Peripheral Nerve Society guideline (2010) lists rituximab as an unproven treatment option, favouring high-dose corticosteroids and escalation to cyclophosphamide if needed.⁴³ Rituximab could possibly be considered on an individual funding basis in patients with refractory non-systemic vasculitic neuropathy, on the basis of its efficacy in ANCA-associated vasculitis.⁴⁴

Two placebo-controlled trials of rituximab for anti-MAG neuropathy showed marginal benefits. In the first study, 4/13 (31%) rituximab-treated patients improved by one or more Inflammatory Neuropathy Course and Treatment (INCAT) score compared with

0/13 placebo-treated patients ($p=0.036$).⁴⁵ In the second study ($n=54$), there was no significant difference in the absolute INCAT sensory score between the groups (negative primary outcome), but the number of patients with improvement in INCAT disability score was higher in the rituximab-treated group.⁴⁶ Several prospective observational studies report improvements in roughly half to two-thirds of patients.^{47–50}

Myasthenia gravis

International consensus guidelines (2016) advise that ‘rituximab should be considered as an early therapeutic option in patients with MuSK-associated myasthenia gravis who have an unsatisfactory response to initial immunotherapy.’⁵¹ A formal consensus could not be reached for AChR-associated myasthenia gravis. Several predominantly retrospective, observational studies and two systematic reviews have investigated rituximab as an acute therapy (usually a single course with variable dosing) for refractory myasthenia gravis (persistent weakness or need for high-dose corticosteroids despite conventional immunosuppression).

Despite many case series being shared between the systematic reviews, the reported response rates in AChR-associated myasthenia gravis are discordant, with 30%–80% of patients achieving a Myasthenia Gravis Foundation of America post-intervention status (MGFA-PIS) of ‘minimal manifestations or better’ following rituximab.^{52–53} This may be explained by variability in patient selection, inclusion of many ‘burnt out’, unresponsive cases and inclusion of cases where MGFA-PIS was not used as an outcome measure in the original report. Response did not correlate well with AChR antibody titres.⁵³ Two ongoing randomised controlled trials may help better define the efficacy of rituximab in AChR-associated myasthenia gravis in the near future.

In comparison, response rates in MuSK-associated myasthenia gravis were high (72%–89%) in both reviews.^{52–53} A further blinded prospective review found 67% of rituximab-treated patients obtained MGFA-PIS of ‘minimal manifestations or better’ versus 26% of controls.⁵⁴ The benefit of rituximab in MuSK-associated myasthenia gravis appears to be more prolonged and correlates better with antibody titres.⁵³ MuSK antibodies are of the IgG4 subtype whereas AChR antibodies are of the IgG1/3 subtype. The superior efficacy of rituximab may therefore be explained by selective depletion of short-lived IgG4-producing B-cells.⁵⁵

Dosing and monitoring of rituximab

Rituximab is given by intravenous infusion over 3–6 hours. A solution for subcutaneous injection is available but is not used in neurology and therefore will not be discussed in this review. There is no validated dosing strategy for rituximab in neuroinflammatory disease and there is great heterogeneity in the

literature. **Figure 4** is a suggested administration guide. The two most common dosing regimens are either 375 mg/m² body surface area given once weekly for 4 weeks (adopted from haemato-oncology) or two infusions of 500–1000 mg given a fortnight apart (adopted from clinical trials in rheumatoid arthritis). Following two 1000 mg infusions, the mean half-life of rituximab is 20.8 days (range 8.58–35.9 days).⁵⁶

In rheumatoid arthritis there is no significant difference in the clinical responses after high-dose (2×1000 mg) and lower dose (2×500 mg) rituximab regimens.⁵⁷ The clinical response correlates with the degree of B-cell depletion, not the rituximab dose used.⁵⁸ The same is likely to be true in neuroinflammatory disease. Doses as low as 100 mg weekly for 3–4 weeks have been used successfully in small series of patients with MS, NMO and anti-NMDAR encephalitis.^{59–62}

Near complete B-cell depletion occurs within a fortnight of infusion and usually persists for 6–12 months. Therefore, where maintenance treatment is planned, repeated courses have commonly been given at regular six monthly intervals. However, patients vary significantly in both the initial rituximab dose required to achieve B-cell depletion and the time to B-cell repopulation. In a study of patients with NMO, 17% repopulated their B-cells before 6 months.⁶³ Prolonged B-cell depletion lasting over 3 years following a single dose of rituximab is also reported.⁶⁴ This makes a case for monitoring and retreatment according to B-cell repopulation, which will identify ‘early repopulators’ at risk of disease relapse, and limit overtreatment of patients with sustained B-cell depletion, thereby preventing complications and reducing cost.

Although rituximab is an anti-CD20 antibody, quantification of CD19⁺ cells using flow cytometry is the preferred method for monitoring B-cell depletion and repopulation. This is because rituximab still present in serum could block binding of fluorophore-labelled anti-CD20 antibodies used in flow cytometry, thereby interfering with the detection of B-cells.

Among the several relapsing illnesses that may benefit from rituximab, relapses from NMO pose the highest risk of permanent disability. However, the critical threshold of B-cells in the measurable peripheral circulation that is associated with NMO relapse is undetermined and is likely to vary with the disease and individual. Neurologists have retreated when the CD19⁺ B-cell count becomes detectable⁶⁵ or more than 0.1% of total circulating lymphocyte count.⁶⁶ Some measure the much smaller memory B-cell (CD19⁺/CD27⁺) population (see **figure 4** — option 2).^{4,67} Switching from six monthly infusions to memory B-cell-monitored treatment reduces cumulative rituximab dose without apparent loss of efficacy.⁶⁸ However, standardisation of flow cytometry techniques and inaccuracy when quantifying very small cell populations can pose problems.⁶⁹ In the UK NMO Service we use monthly CD19⁺ B-cell monitoring and

have found 1% (an arbitrary value based on clinician experience) to be an acceptable cut-off for retreatment for the majority of patients.⁷⁰ In those who relapse with a detectable B-cell count below 1%, retreatment aiming for complete suppression is suggested before considering treatment failure and switching immunotherapy.

Treatment failure

Where treatment failure is suspected, we advise excluding alternative possibilities, such as intercurrent infection, and ensuring that B-cell depletion is adequate by checking a peripheral blood CD19⁺ B-cell count. Possible reasons for treatment failure include the following:

Lack of efficacy of B-cell depletion

In a large NMOSD cohort (n=100), nine patients (9%) experienced relapses despite CD19⁺/CD27⁺ memory B-cell depletion within target range.⁷¹ NMOSD relapses occurring on rituximab are generally milder than those occurring off treatment. Non-circulating B-cells in lymphoid tissues (ie, most of the total body B-cell population) and long-lived plasma cells are not thought to be depleted by rituximab and may have a role in breakthrough disease.

Early relapses/delayed therapeutic onset

Early NMOSD relapses can follow rituximab induction therapy.^{4 72 73} This may be due to incomplete B-cell depletion. Alternatively, initial B-cell depletion may induce release of systemic B-cell activating factor, promoting autoantibody production by plasma cells, and 'leading to a transient rise' in antibody titre and early relapses.⁷⁴

Incomplete B-cell depletion/early repopulators

Genetic factors may explain why some patients do not maintain adequate B-cell depletion. These include polymorphisms in the B-cell activating factor gene or in the Fc gamma receptor 3A gene expressed by the effector cells that mediate B-cell killing (figure 3).^{71 75} Another hypothetical reason might be the development of antidrug antibodies.

Antidrug antibodies

The efficacy of some monoclonal antibodies is reduced by antidrug antibodies, for example, anti-tumour necrosis factor agents. Fab binding could have a neutralising effect and Fc binding may increase drug clearance. However, the role of anti-drug antibodies in rituximab treatment failure is uncertain. They were identified in a third of patients with MS treated with rituximab.⁷⁶ They may have a greater effect in patients on low-dose rituximab (100 mg infusions)⁷⁷ but higher, standard doses probably overcome the effects of antidrug antibodies.^{76 78} Outside of trials, detection of antidrug antibodies can be technically

difficult, poorly standardised and is hard to obtain for routine use.

Combination with other immunosuppressive medications

Due to the risk of early relapse after rituximab initiation, some neurologists continue moderate-dose prednisolone (usually 10–20 mg daily) for 4–12 weeks in NMOSD. The decision to continue corticosteroids depends on the condition being treated and individual patient factors.

Combination with other immunosuppressive medications can be considered in some circumstances but must be balanced against the risk of immunocompromise. We generally reserve combination therapy for refractory disease. In treating rheumatoid arthritis, rituximab is often combined with methotrexate or leflunomide but there is little evidence to guide practice in neuroinflammatory disease.

Risks and adverse events

The efficacy of rituximab and current safety data support its use, and the longer term safety profile will become clearer with increasing use of B-cell-depleting therapies like ocrelizumab. Tables 2 and 3 summarise the approach to adverse events and special prescribing circumstances. *Italicised* points denote personal practice, rather than established recommendations.

The relatively favourable safety profile of rituximab is likely due to preservation of protective antibody production by CD20^{negative} long-lived plasma cells. However, it remains uncertain whether long-term humoral immunity results entirely from these self-sustaining cells or whether replenishment of plasma cells by memory B-cells is required. Several studies have reported secondary antibody deficiency complicating rituximab therapy—a risk that appears to increase with repeated courses and lower pretreatment levels of immunoglobulins.^{67 78–80} Not all patients with hypogammaglobulinaemia develop infections, but we recently reported a series of serious sinopulmonary infections associated with hypogammaglobulinaemia occurring in patients with NMOSD on long-term rituximab.⁸¹ All patients had prior exposure to immunosuppressant medications. This has led to changes in our practice, with greater focus on pretreatment vaccinations, B-cell monitoring to limit cumulative rituximab dose and targeted use of immunoglobulin replacement therapy to mitigate sinopulmonary infections in selected patients (see figure 4, table 3 and Box 1).

Pregnancy and breast feeding

Rituximab crosses the placenta after 20 weeks' gestation. Although not known for certain, the existing evidence suggests that rituximab is possibly safe for use during early pregnancy (see table 2).⁸² The prolonged B-cell-depleting effect (sometimes greater

Table 2 Other considerations and special circumstances when prescribing rituximab

| Circumstance | Known risks | Recommended management |
|--|--|--|
| Pregnancy | The safety of B-cell-depleting biologic therapies is not fully known. In 153 exposed pregnancies, rates of miscarriage and congenital malformation were similar to expected rates in the general population. ⁸² Placental transfer of immunoglobulins (including rituximab) occurs from the second trimester onwards. Exposure during organogenesis is therefore likely to be very limited. Exposure in later pregnancy has resulted in neonatal B-cell depletion, which recovered in 3–6 months. ⁸² | Effective contraception (in both sexes) is advised by manufacturers during and for 12 months after treatment. ^{6,56} Avoid in pregnancy unless potential benefit to the mother outweighs risk of B-cell depletion in the fetus ^{6,56} (see the text section 'risks and adverse events' for further discussion). Live vaccines should not be given to exposed babies for the first 6 months of life. <i>We counsel women before starting rituximab and perform a pregnancy test before each infusion.</i> |
| Breast feeding | There are no studies formally assessing safety of rituximab during lactation. As a large molecule, it is unlikely to transfer to breast milk in any significant amounts. The exception to this is the first 3 days post partum when gaps between breast alveolar cells are larger and transfer of immunoglobulins is possible. Rituximab has poor gastrointestinal absorption and is likely to be destroyed in the baby's gut. ⁹² | Despite apparent low risks there is still insufficient evidence to guarantee safety. Manufacturers advise that women avoid breast feeding during and for 12 months after treatment. ^{6,56} <i>We counsel mothers and support their decision if they choose to breast feed.</i> |
| Existing cardiac disease | Severe cardiac disease is a contraindication to rituximab when used for rheumatoid arthritis or ANCA-associated vasculitis (but not lymphoma) due to a higher risk of myocardial infarction, arrhythmia or decompensating severe heart failure. | Consider alternative treatment options in patients with severe uncontrolled cardiac disease. |
| Previous hepatitis B virus (HBV) infection | Risk of HBV reactivation after rituximab is well described and includes fatal cases of fulminant hepatitis. ⁹³ Reactivation can occur in both HBVsAg-positive and HBVsAg-negative HBVcAb-positive patients ('reverse seroconversion'). ⁹³ | Do not give rituximab to patients with active HBV hepatitis. Test HBVsAg, HBVcAb and liver function tests in all patients prior to starting rituximab. ⁹³ Refer those with positive serology to a specialist for prophylactic antiviral therapy, which must be continued for the duration of therapy. Monitor these patients with serial HBV DNA titres, liver function tests and HBVsAg (if HBVsAg negative at baseline). ⁹⁴ |
| Previous hepatitis C virus (HCV) infection | Information is conflicting but reactivation of HCV seems to be much less common than HBV. Increases in HCV RNA load and hepatic flares are reported, but many cases are confounded by additional immunosuppressive/hepatotoxic medications. ^{95,96} | <i>We recommend screening for HCV antibody prior to starting treatment. Positivity is not a contraindication to rituximab but we suggest such patients should be jointly managed with hepatology and monitored for HCV activity (HCV RNA titres and liver function tests).</i> |
| Previous/latent tuberculosis (TB) | Risk of TB reactivation after rituximab appears negligible, ⁹⁷ though coadministration with glucocorticoids may contribute additional risk. | Do not give rituximab in cases of active TB. <i>Although routine TB screening may be unnecessary,⁹⁸ we screen for latent TB with QuantiFERON-TB Gold or tuberculin skin testing in high-risk patients (eg, from endemic regions).</i> |
| Vaccinations | There is a theoretical risk that live vaccines (eg, yellow fever, varicella-zoster) may cause infection. Other standard inactivated vaccines are safe but they may be less effective after receiving rituximab. ^{99,100} | Where possible give all routine vaccinations at least 4 weeks prior to initiating rituximab (and at least 8 weeks prior for live vaccines). ^{56,98} Do not give live vaccines to patients treated with rituximab. <i>We recommend annual influenza vaccine and five-yearly pneumococcal vaccine throughout treatment.</i> |

Italicised points reflect personal practice rather than established recommendations.

ANCA, antineutrophil cytoplasmic antibody; HBVcAb, hepatitis B virus core antibody; HBVsAg, hepatitis B virus surface antigen.

Table 3 Rituximab treatment risks and management. Unless a separate reference is given, information is adapted from MabThera SmPC [56], experience from RA

| Risk | Description | Recommended management |
|-------------------------------|--|---|
| Infusion reactions | The highest risk is with the first infusion (~30%). Most reactions are mild (headache, pruritus, throat irritation, flushing, rash, urticaria, fever, hypo/hypertension). Severe or life-threatening anaphylactoid infusion reactions leading to drug discontinuation are uncommon (<1/100 cases). Pretreatment with corticosteroids reduces the frequency and severity of reactions. | <i>If possible, withhold antihypertensive medications on the morning of the infusion.</i> Adhere to manufacturers' advice regarding infusion rates. Unless contraindicated, give intravenous methylprednisolone 100 mg before the infusion. Manage mild reactions with interruption or slowing of infusion, paracetamol and antihistamine. Restart infusion at a reduced rate once symptoms resolve. Manage severe reactions as per the Advanced Life Support algorithm. Have necessary equipment and medications available. |
| Mucocutaneous reactions | Severe skin reactions including Stevens-Johnson syndrome and toxic epidermal necrolysis occur very rarely following rituximab infusion, some with fatal outcome (<1/10 000 cases). | Do not re-treat with rituximab if the patients develops a severe skin reaction. |
| Adverse cardiac events | Rituximab is not directly cardiotoxic but angina pectoris, arrhythmias and heart failure rarely occur (<1/1000 cases). | Consider alternative treatment options in patients with severe uncontrolled cardiac disease. Manufacturers recommend 'close monitoring' of those with known cardiac disease. |
| Infections | Most infections are mild to moderate, consisting of upper respiratory tract and urinary tract infections (very common, >1/10 cases). Bronchitis, sinusitis and gastroenteritis occur in 1/100-1/10 cases. Serious opportunistic infections are rare, including reactivation of hepatitis B. Hypogammaglobulinaemia and neutropenia may contribute to infection risk in some cases (see below). | Do not give rituximab to patients with active infection. Ask and counsel patients regarding infection or risk of infection. <i>We recommend annual influenza vaccine and five-yearly pneumococcal vaccine throughout treatment.</i> See notes in table 2 regarding specific infectious risks: hepatitis B, C and tuberculosis. |
| Secondary antibody deficiency | Decreased IgM levels are very common; decreased IgG levels are common. Hypogammaglobulinaemia seems to be time and dose dependent. ^{78,79} Prior exposure to immunosuppressant drugs may be an additional risk factor. ^{81,88} Patients with low IgG are at risk of infection, particularly recurrent bacterial sinopulmonary infections, but risk does not correlate directly with IgG level. ^{78,81} Patients with low baseline IgG levels are at particular risk of infection. ⁸⁰ | <i>Check baseline total serum immunoglobulin levels prior to starting rituximab. Be aware of higher infection risk in patients with low IgG and consider alternative options. Recheck serum Ig in the context of severe or recurrent infections. See Box 1 for approach to symptomatic secondary antibody deficiency. Consider checking IgG levels in patients with a history of immunosuppressive medication use before retreatment with rituximab.</i> |
| Neutropenia | May occur after first or subsequent infusions. The highest risk is 3–6 months after infusion. Prevalence of 1.3%–2.3% when rituximab is given for autoimmune indications ¹⁰¹ ; reported in MS and NMOSD. ^{102–104} The severity and duration of neutropenia is unpredictable. Many cases are asymptomatic and self-limiting but grade IV neutropenia (<0.5/10 ⁹ /L) with severe infection is rarely reported. | Check full blood count prior to administering rituximab and on symptoms or signs of infection. <i>Observe cases of asymptomatic mild neutropenia. G-CSF has been used to hasten recovery in grade IV neutropenia or sepsis.</i> ¹⁰⁴ Though it may recur, neutropenia is not a contraindication to ongoing rituximab therapy—several case series support ongoing use in autoimmune disease. ^{101,103–105} |
| PML | Rituximab may increase risk of PML in individuals already at risk due to pre-existing conditions or immunosuppression. Risk is estimated at 1 in 30 000 cases exposed to rituximab. ¹⁰⁶ No cases have yet been described when rituximab is used alone to treat neuroinflammatory disease. | Discuss progressive multifocal leucoencephalopathy risk during consent process. JCV antibody titres do not have an established role in rituximab use. <i>MRI if suggestive clinical features develop.</i> |
| PRES | Described following rituximab administration in NMOSD and non-neurological indications. Prevalence of 0.5% in a large cohort of patients with NMOSD. ¹³ | <i>MRI if suggestive clinical features develop.</i> |
| Malignancy | No increased risk identified. | |

Italicised points reflect personal practice rather than established recommendations.

G-CSF, granulocyte colony-stimulating factor; JCV, John Cunningham virus; MS, multiple sclerosis; NMOSD, neuromyelitis optica spectrum disorder; PML, progressive multifocal leucoencephalopathy; PRES, posterior reversible encephalopathy syndrome; RA, rheumatoid arthritis.

than the 40 weeks of gestation) can be used advantageously. For example, in planned pregnancies, rituximab could be given before conception and after delivery, sparing the gestating fetus from B-cell depletion.

In relapsing conditions with high morbidity, such as NMOSD, the risk of relapse during protracted interruption of rituximab therapy for conception and pregnancy is a dilemma for many women. A recent expert review suggests that two doses of 1000 mg

Box 1. Approach to managing symptomatic secondary antibody deficiency

This advice is appropriate for patients satisfying all three of the following criteria:

- ▶ Maintenance rituximab therapy.
- ▶ Serious or recurrent (particularly respiratory) infections.
- ▶ Total serum IgG <6.0 g/L (recurrent infection is more likely if IgG <4.0 g/L).

Suggested management to mitigate infection risk:⁸⁹

- ▶ Liaise with local immunology service.
- ▶ Check disease-specific circulating antibody titres against *Haemophilus influenzae* (Hib), *Clostridium tetani* and pneumococcal capsular polysaccharide.
- ▶ If titres are below protective cut-off levels (Hib >1 mcg/mL, tetanus >0.1 IU/mL, pneumococcus >50 mg/L),⁹⁰ vaccinate patients and retest titres after 6 weeks.
- ▶ Trial prophylactic antibiotic therapy.
- ▶ Immunoglobulin replacement therapy (IGRT) is justifiable if the response to test vaccination and/or antibiotics is poor.⁹¹
 - Initiate intravenous immunoglobulin at 0.4–0.6 g/kg/month or consider subcutaneous formulations.
 - Aim for serum IgG within normal range (6–16 g/L).
- ▶ Assess clinical response to IGRT after 6 months (burden of infections) and consider the need for long-term treatment. IGRT is unlikely to reduce the frequency of urinary tract infections.

could be given as close as 1 month before planned conception in the hope that B-cell depletion will persist for the duration of pregnancy. They advise that rituximab could be resumed in the first week after delivery given the very high postpartum risk of NMOSD relapse.⁸³ However, women should be counselled about the limited data on rituximab-exposed pregnancies.⁸⁴

Ocrelizumab

While this review is primarily intended to cover rituximab, it may be remiss not to discuss ocrelizumab, as this is the first anti-CD20 therapy to gain a licence (Food and Drug Administration, EMA) for a neurological indication (MS). Ocrelizumab has been in development for over a decade but progress in rheumatoid arthritis was halted in 2010 after data from multiple phase III trials suggested an excess of serious infections and a poor benefit-risk profile when combined with methotrexate. However, trials in MS continued and it was licensed in the USA in March 2017 and in Europe in January 2018. The European licence is for treating active relapsing

MS and early primary progressive MS with imaging features of inflammatory activity. Recent phase III randomised controlled trials showed that ocrelizumab reduced annualised relapse rates versus interferon beta-1a in relapsing MS, and reduced 12-week confirmed disability progression versus placebo in primary progressive MS.^{85 86} The trials used a fixed dosing schedule over 2 years of follow-up. The safety profile appeared favourable. Infusion reactions were frequent but rarely problematic. Upper respiratory tract infections were more common after ocrelizumab but there was no excess of serious or opportunistic infections. Ocrelizumab was associated with low total serum IgM in 16% of patients, but no increased infection risk was observed in these patients. There was no reduction in total serum IgG or disease-specific antibody titres over the 2-year follow-up period. An increased risk of malignancies (including breast cancer) was observed in the ocrelizumab trial arms but the incidence was within the background rate expected for an MS population.^{85 86}

Ocrelizumab has been licensed as a fixed six-monthly dosing regimen with no specific immune function monitoring, despite the fact that considerable interindividual variation is observed in time-to-repopulation of B-cells following ocrelizumab.⁸⁷ The experience of ocrelizumab in clinical trials may seem inconsistent with our and others' real-world experience of rituximab, in which we have observed the coexistence of secondary antibody deficiency and increased rate of infections in patients with NMOSD on maintenance therapy.^{78–81} We postulate that this may relate to a degree of baseline immune dysfunction caused by prior immunosuppressive medication and a longer treatment duration than is recorded in the pivotal ocrelizumab studies. This echoes experience in vasculitis, where previous immunosuppressive therapy (particularly cyclophosphamide) has been identified as a risk factor for greater decline in immunoglobulin levels and more prolonged B-cell depletion after rituximab.^{25 88} In contrast, the vast majority of patients recruited to the MS ocrelizumab trials were treatment naïve or had used non-immunosuppressive disease-modified therapies. Safety information on ocrelizumab from postmarketing surveillance will be useful to further inform risk and to guide whether flexible dosing may become preferable in certain situations. Sequential treatment effects following high-efficacy disease-modified therapies are also yet to be explored.

CONCLUSION

Rituximab is a valuable treatment option for a variety of neuroinflammatory conditions. While there are no randomised controlled trials and questions remain about optimal dosing strategies, there is a growing body of evidence to support its use in specific situations. Overall, rituximab has an excellent safety

profile, and relative to other immunomodulatory treatments, it may be an option for managing severe active diseases in pregnancy. However, neurologists need to be aware of specific management issues, including secondary antibody deficiency in patients requiring maintenance B-cell depletion. Specific risk factors to consider include low pretreatment immunoglobulin levels, prior use of immunosuppressive drugs or a requirement for ongoing combination therapy.

Newer and more costly B-cell-depleting therapies show additional promise in recent and ongoing trials but it remains to be seen if more effective and prolonged B-cell depletion will pose additional risks. Prospective registries with extended follow-up will be important in better defining the real-life risks and benefits for patients.

Author affiliations

¹Department of Neurology, The Walton Centre NHS Foundation Trust, Liverpool, UK

²Helen Durham Centre for Neuroinflammation, University Hospital of Wales, Cardiff, UK

³Division of Psychological Medicine and Clinical Neurosciences, School of Medicine, Cardiff University, Cardiff, UK

⁴Immunodeficiency Centre for Wales, University Hospital of Wales, Cardiff, UK

⁵School of Medicine, Cardiff University, Cardiff, UK

⁶Department of Musculoskeletal Diseases, Institute of Ageing and Chronic Diseases, University of Liverpool, Liverpool, UK

⁷Department of Neurology, Research Institute and Hospital of National Cancer Center, Goyang, South Korea

⁸Weill Institute for Neurosciences, University of California, San Francisco, California, USA

⁹School of Medicine, University of Liverpool, Liverpool, UK

Contributors DHW drafted the manuscript and subsequent revisions. All authors critically appraised, revised the manuscript for important intellectual content and approved the final version of the article. AJ conceived and designed the review.

Competing interests ECT has received honoraria and support to attend educational meetings from Merck, support to attend educational meetings from Biogen and salary as a UK MS Registry fellow from Biogen. SJ has received advisory board, consulting, meeting attendance, speaker, study, author and project support from CSL Behring, Shire, LFB, Biotest, Binding Site, UCB Pharma, Grifols, Octapharma, SOBI, GSK, Sanofi, BPL, Zarodex, Weatherden and Uptodate. SH has previously received funding from the NIHR Oxford Biomedical Research Centre, the Watney Trust and Myaware. RJM has acted as consultant to, or received support for speaking at or chairing meetings, or received grant funding for research from AKL Pharma, BMS, Cellgene, Chugai, Eli Lilly, Novartis, Pfizer, Roche, Sandoz, Sanofi and UCB Pharma. HJK has received speaking and/or consulting support from Bayer Schering Pharma, Biogen, Celltrion, Eisai, HanAll BioPharma, MedImmune, Merck Serono, Novartis, Sanofi Genzyme, Teva-Handok and UCB; research support from Ministry of Science & ICT, Sanofi Genzyme, Teva-Handok and UCB. He is a steering committee member for MedImmune, and coeditor/associated editor of MS Journal-Experimental, Translational and Clinical, and Journal of Clinical Neurology. NPR has received personal fees and other from Biogen, grants from Novartis, grants and other from Genzyme, Roche and Teva, and personal fees from Merck. BACC has received personal compensation for consulting for AbbVie, Biogen, EMD Serono, GeNeuro, Novartis and Sanofi Genzyme. AJ has received compensation for advisory board, consulting, meeting attendance and

speaking from Biogen, Terumo-BCT, Genentech, Shire and Chugai Pharmaceuticals.

Patient consent Not required.

Provenance and peer review Commissioned; externally peer reviewed by Jackie Palace, Oxford, UK; Neil Scolding, Bristol, UK; and Jon Sussman, Manchester, UK.

REFERENCES

- Perez-Andres M, Paiva B, Nieto WG, *et al.* Human peripheral blood B-cell compartments: a crossroad in B-cell traffic. *Cytometry B Clin Cytom* 2010;78(S1):47–60.
- Magliozzi R, Howell O, Vora A, *et al.* Meningeal B-cell follicles in secondary progressive multiple sclerosis associate with early onset of disease and severe cortical pathology. *Brain* 2007;130(Pt 4):1089–104.
- Baker D, Marta M, Pryce G, *et al.* Memory B-cells are major targets for effective immunotherapy in relapsing multiple sclerosis. *EBioMedicine* 2017;16:41–50.
- Kim SH, Kim W, Li XF, *et al.* Repeated treatment with rituximab based on the assessment of peripheral circulating memory B-cells in patients with relapsing neuromyelitis optica over 2 years. *Arch Neurol* 2011;68:1412–9.
- Cree BA, Bennett JL, Sheehan M, *et al.* Placebo-controlled study in neuromyelitis optica—ethical and design considerations. *Mult Scler* 2016;22:862–72.
- British National Formulary: Rituximab, 2018. <https://bnf.nice.org.uk/drug/rituximab.html> [accessed 7th Mar].
- Bar-Or A, Calabresi PA, Arnold D, *et al.* Rituximab in relapsing-remitting multiple sclerosis: a 72-week, open-label, phase I trial. *Ann Neurol* 2008;63:395–400.
- Hauser SL, Waubant E, Arnold DL, *et al.* B-cell depletion with rituximab in relapsing-remitting multiple sclerosis. *N Engl J Med Overseas Ed* 2008;358:676–88.
- Naismith RT, Piccio L, Lyons JA, *et al.* Rituximab add-on therapy for breakthrough relapsing multiple sclerosis: a 52-week phase II trial. *Neurology* 2010;74:1860–7.
- Hawker K, O'Connor P, Freedman MS, *et al.* Rituximab in patients with primary progressive multiple sclerosis: results of a randomized double-blind placebo-controlled multicenter trial. *Ann Neurol* 2009;66:460–71.
- Salzer J, Svenningsson R, Alping P, *et al.* Rituximab in multiple sclerosis: a retrospective observational study on safety and efficacy. *Neurology* 2016;87:2074–81.
- Granqvist M, Boremalm M, Poorghobad A, *et al.* Comparative effectiveness of rituximab and other initial treatment choices for multiple sclerosis. *JAMA Neurol* 2018;75:320–7.
- Damato V, Evoli A, Iorio R. Efficacy and safety of rituximab therapy in neuromyelitis optica spectrum disorders: a systematic review and meta-analysis. *JAMA Neurol* 2016;73:1342–8.
- Palace J, Leite MI, Leite I, *et al.* A practical guide to the treatment of neuromyelitis optica. *Pract Neurol* 2012;12:209–14.
- Lee WJ, Lee ST, Byun JI, *et al.* Rituximab treatment for autoimmune limbic encephalitis in an institutional cohort. *Neurology* 2016;86:1683–91.
- Titulaer MJ, McCracken L, Gabilondo I, *et al.* Treatment and prognostic factors for long-term outcome in patients with anti-NMDA receptor encephalitis: an observational cohort study. *Lancet Neurol* 2013;12:157–65.
- Dale RC, Brilot F, Duffy LV, *et al.* Utility and safety of rituximab in pediatric autoimmune and inflammatory CNS disease. *Neurology* 2014;83:142–50.

18. Clinical Commissioning Policy, 2018. Rituximab for second line treatment for anti-NMDAR autoimmune encephalitis (all ages). NHS England. <https://www.england.nhs.uk/wp-content/uploads/2018/03/ccp-rituximab-for-second-line-treatment-for-anti-nmdar-autoimmune-encephalitis.pdf>
19. Brown JW, Martin PJ, Thorpe JW, *et al.* Long-term remission with rituximab in refractory leucine-rich glioma inactivated 1 antibody encephalitis. *J Neuroimmunol* 2014;271:66–8.
20. Irani SR, Gelfand JM, Bettcher BM, *et al.* Effect of rituximab in patients with leucine-rich, glioma-inactivated 1 antibody-associated encephalopathy. *JAMA Neurol* 2014;71:896–900.
21. Salvarani C, Brown RD, Christianson TJ, *et al.* Adult primary central nervous system vasculitis treatment and course: analysis of one hundred sixty-three patients. *Arthritis Rheumatol* 2015;67:1637–45.
22. Berlit P, Becker J, Kraemer M. Rituximab in primary angitis of the CNS (P3.076). *Neurology* 2017;88.
23. De Boysson H, Arquiza C, Guillevin L, *et al.* Rituximab for primary angitis of the central nervous system: report of 2 patients from the French COVAC cohort and review of the literature. *J Rheumatol* 2013;40:2102–3.
24. Salvarani C, Brown RD, Huston J, *et al.* Treatment of primary CNS vasculitis with rituximab: case report. *Neurology* 2014;82:1287–8.
25. Yates M, Watts RA, Bajema IM, *et al.* EULAR/ERA-EDTA recommendations for the management of ANCA-associated vasculitis. *Ann Rheum Dis* 2016;75:1583–94.
26. Jones RB, Furuta S, Tervaert JW, *et al.* Rituximab versus cyclophosphamide in ANCA-associated renal vasculitis. *Ann Rheum Dis* 2015;74:1178–82.
27. Stone JH, Merkel PA, Spiera R, *et al.* Rituximab versus cyclophosphamide for ANCA-associated vasculitis. *N Engl J Med* 2010;363:221–32.
28. National Institute for Health and Care Excellence technology appraisal guidance TA308, 2014. Rituximab in combination with glucocorticoids for treating anti-neutrophil cytoplasmic antibody-associated vasculitis. <https://www.nice.org.uk/guidance/ta308/chapter/1-Guidance> [Accessed 16 Jun 2018].
29. Baker MR, Das M, Isaacs J, *et al.* Treatment of stiff person syndrome with rituximab. *J Neurol Neurosurg Psychiatry* 2005;76:999–1001.
30. Dupond JL, Essalmi L, Gil H, *et al.* Rituximab treatment of stiff-person syndrome in a patient with thymoma, diabetes mellitus and autoimmune thyroiditis. *J Clin Neurosci* 2010;17:389–91.
31. Katoh N, Matsuda M, Ishii W, *et al.* Successful treatment with rituximab in a patient with stiff-person syndrome complicated by dysthyroid ophthalmopathy. *Intern Med* 2010;49:237–41.
32. Dalakas MC, Rakocevic G, Dambrosia JM, *et al.* A double-blind, placebo-controlled study of rituximab in patients with stiff person syndrome. *Ann Neurol* 2017;82:271–7.
33. Clinical Commissioning Policy, 2017. Rituximab for chronic inflammatory demyelinating polyradiculoneuropathy (CIDP), multifocal motor neuropathy (MMN), vasculitis of the peripheral nervous system & IgM paraprotein-associated demyelinating neuropathy (adults). NHS England. <https://www.england.nhs.uk/publication/commissioning-policy-rituximab-for-chronic-inflammatory-demyelinating-polyradiculoneuropathy-cidp-multifocal-motor-neuropathy-mmn-vasculitis-of-the-peripheral-nervous-system-igm-paraprotein-a/>
34. Mahdi-Rogers M, van Doorn PA, Hughes RA. Immunomodulatory treatment other than corticosteroids, immunoglobulin and plasma exchange for chronic inflammatory demyelinating polyradiculoneuropathy. *Cochrane Database Syst Rev* 2013;6:CD003280.
35. Benedetti L, Briani C, Franciotta D, *et al.* Rituximab in patients with chronic inflammatory demyelinating polyradiculoneuropathy: a report of 13 cases and review of the literature. *J Neurol Neurosurg Psychiatry* 2011;82:306–8.
36. Cocito D, Grimaldi S, Paolasso I, *et al.* Immunosuppressive treatment in refractory chronic inflammatory demyelinating polyradiculoneuropathy. A nationwide retrospective analysis. *Eur J Neurol* 2011;18:1417–21.
37. Querol L, Rojas-García R, Diaz-Manera J, *et al.* Rituximab in treatment-resistant CIDP with antibodies against paranodal proteins. *Neurol Neuroimmunol Neuroinflamm* 2015;2:149.
38. Delmont E, Manso C, Querol L, *et al.* Autoantibodies to nodal isoforms of neurofascin in chronic inflammatory demyelinating polyneuropathy. *Brain* 2017;140:1851–8.
39. Levine TD, Pestronk A. IgM antibody-related polyneuropathies: b-cell depletion chemotherapy using Rituximab. *Neurology* 1999;52:1701–4.
40. Stieglbauer K, Topakian R, Hinterberger G, *et al.* Beneficial effect of rituximab monotherapy in multifocal motor neuropathy. *Neuromuscul Disord* 2009;19:473–5.
41. Chaudhry V, Cornblath DR. An open-label trial of rituximab (Rituxan®) in multifocal motor neuropathy. *J Peripher Nerv Syst* 2010;15:196–201.
42. Gorson KC, Natarajan N, Ropper AH, *et al.* Rituximab treatment in patients with IVIg-dependent immune polyneuropathy: a prospective pilot trial. *Muscle Nerve* 2007;35:66–9.
43. Collins MB, Dyck PJ, Gronseth GS, *et al.* Peripheral nerve society guideline on the classification, diagnosis, investigation, and immunosuppressive therapy of non-systemic vasculitic neuropathy: executive summary. *J Peripher Nerv Syst* 2010;15:176–84.
44. Blaes F. Diagnosis and therapeutic options for peripheral vasculitic neuropathy. *Ther Adv Musculoskelet Dis* 2015;7:45–55.
45. Dalakas MC, Rakocevic G, Salajegheh M, *et al.* Placebo-controlled trial of rituximab in IgM anti-myelin-associated glycoprotein antibody demyelinating neuropathy. *Ann Neurol* 2009;65:286–93.
46. Léger JM, Viala K, Nicolas G, *et al.* Placebo-controlled trial of rituximab in IgM anti-myelin-associated glycoprotein neuropathy. *Neurology* 2013;80:2217–25.
47. Renaud S, Gregor M, Fuhr P, *et al.* Rituximab in the treatment of polyneuropathy associated with anti-MAG antibodies. *Muscle Nerve* 2003;27:611–5.
48. Benedetti L, Briani C, Grandis M, *et al.* Predictors of response to rituximab in patients with neuropathy and anti-myelin associated glycoprotein immunoglobulin M. *J Peripher Nerv Syst* 2007;12:102–7.
49. Benedetti L, Briani C, Franciotta D, *et al.* Long-term effect of rituximab in anti-mag polyneuropathy. *Neurology* 2008;71:1742–4.
50. Niermeijer JM, Eurelings M, Lokhorst HL, *et al.* Rituximab for polyneuropathy with IgM monoclonal gammopathy. *J Neurol Neurosurg Psychiatry* 2009;80:1036–9.
51. Sanders DB, Wolfe GI, Benatar M, *et al.* International consensus guidance for management of myasthenia gravis: Executive summary. *Neurology* 2016;87:419–25.

52. Iorio R, Damato V, Alboini PE, *et al.* Efficacy and safety of rituximab for myasthenia gravis: a systematic review and meta-analysis. *J Neurol* 2015;262:1115–9.
53. Tandan R, Hehir MK, Waheed W, *et al.* Rituximab treatment of myasthenia gravis: a systematic review. *Muscle Nerve* 2017;56:185–96.
54. Hehir MK, Hobson-Webb LD, Benatar M, *et al.* Rituximab as treatment for anti-MuSK myasthenia gravis: multicenter blinded prospective review. *Neurology* 2017;89:1069–77.
55. Díaz-Manera J, Martínez-Hernández E, Querol L, *et al.* Long-lasting treatment effect of rituximab in MuSK myasthenia. *Neurology* 2012;78:189–93.
56. Mabthera SmPC, 2018. <https://www.medicines.org.uk/emc/product/3801/smpc> [Accessed 7 Mar 2018].
57. Bredemeier M, de Oliveira FK, Rocha CM. Low-versus high-dose rituximab for rheumatoid arthritis: a systematic review and meta-analysis. *Arthritis Care Res* 2014;66:228–35.
58. Vital EM, Rawstron AC, Dass S, *et al.* Reduced-dose rituximab in rheumatoid arthritis: efficacy depends on degree of B-cell depletion. *Arthritis Rheum* 2011;63:603–8.
59. Nielsen AS, Miravalle A, Langer-Gould A, *et al.* Maximally tolerated versus minimally effective dose: the case of rituximab in multiple sclerosis. *Mult Scler* 2012;18:377–8.
60. Yang CS, Yang L, Li T, *et al.* Responsiveness to reduced dosage of rituximab in chinese patients with neuromyelitis optica. *Neurology* 2013;81:710–3.
61. Zhang M, Zhang C, Bai P, *et al.* Effectiveness of low dose of rituximab compared with azathioprine in chinese patients with neuromyelitis optica: an over 2-year follow-up study. *Acta Neurol Belg* 2017;117:695–702.
62. Wang BJ, Wang CJ, Zeng ZL, *et al.* Lower dosages of rituximab used successfully in the treatment of anti-NMDA receptor encephalitis without tumour. *J Neurol Sci* 2017;377:127–32.
63. Greenberg BM, Graves D, Remington G, *et al.* Rituximab dosing and monitoring strategies in neuromyelitis optica patients: creating strategies for therapeutic success. *Mult Scler* 2012;18:1022–6.
64. Yi JS, Decroos EC, Sanders DB, *et al.* Prolonged B-cell depletion in MuSK myasthenia gravis following rituximab treatment. *Muscle Nerve* 2013;48:992–3.
65. Pellkofer HL, Krumbholz M, Berthele A, *et al.* Long-term follow-up of patients with neuromyelitis optica after repeated therapy with rituximab. *Neurology* 2011;76:1310–5.
66. Mealy MA, Wingerchuk DM, Palace J, *et al.* Comparison of relapse and treatment failure rates among patients with neuromyelitis optica: multicenter study of treatment efficacy. *JAMA Neurol* 2014;71:324–30.
67. Kim SH, Huh SY, Lee SJ, *et al.* A 5-year follow-up of rituximab treatment in patients with neuromyelitis optica spectrum disorder. *JAMA Neurol* 2013;70:1110–7.
68. Cohen M, Romero G, Bas J, *et al.* Monitoring CD27+ memory B-cells in neuromyelitis optica spectrum disorders patients treated with rituximab: Results from a bicentric study. *J Neurol Sci* 2017;373:335–8.
69. Collongues N, de Seze J. An update on the evidence for the efficacy and safety of rituximab in the management of neuromyelitis optica. *Ther Adv Neurol Disord* 2016;9:180–8.
70. Pittock SJ, Lucchinetti CF. Neuromyelitis optica and the evolving spectrum of autoimmune aquaporin-4 channelopathies: a decade later. *Ann N Y Acad Sci* 2016;1366:20–39.
71. Kim SH, Jeong IH, Hyun JW, *et al.* Treatment outcomes with rituximab in 100 patients with neuromyelitis optica: Influence of FCGR3A polymorphisms on the therapeutic response to rituximab. *JAMA Neurol* 2015;72:989–95.
72. Lindsey JW, Meulmester KM, Brod SA, *et al.* Variable results after rituximab in neuromyelitis optica. *J Neurol Sci* 2012;317:103–5.
73. Perumal JS, Kister I, Howard J, *et al.* Disease exacerbation after rituximab induction in neuromyelitis optica. *Neurology - Neuroimmunology Neuroinflammation* 2015;2:61.
74. Nakashima I, Takahashi T, Cree BA, *et al.* Transient increases in anti-aquaporin-4 antibody titers following rituximab treatment in neuromyelitis optica, in association with elevated serum BAFF levels. *J Clin Neurosci* 2011;18:997–8.
75. Ruysen-Witrand A, Rouanet S, Combe B, *et al.* Association between -871C>T promoter polymorphism in the B-cell activating factor gene and the response to rituximab in rheumatoid arthritis patients. *Rheumatology* 2013;52:636–41.
76. Dunn N, Juto A, Ryner M, *et al.* Rituximab in multiple sclerosis: Frequency and clinical relevance of anti-drug antibodies. *Mult Scler* 2018;24:1224–33.
77. Li T, Zhang LJ, Zhang QX, *et al.* Anti-rituximab antibody in patients with NMOSDs treated with low dose rituximab. *J Neuroimmunol* 2018;316:107–11.
78. van Vollenhoven RF, Emery P, Bingham CO, *et al.* Long-term safety of rituximab in rheumatoid arthritis: 9.5-year follow-up of the global clinical trial programme with a focus on adverse events of interest in RA patients. *Ann Rheum Dis* 2013;72:1496–502.
79. De La Torre I, Leandro MJ, Valor L, *et al.* Total serum immunoglobulin levels in patients with RA after multiple B-cell depletion cycles based on rituximab: relationship with B-cell kinetics. *Rheumatology* 2012;51:833–40.
80. Gottenberg JE, Ravaud P, Bardin T, *et al.* Risk factors for severe infections in patients with rheumatoid arthritis treated with rituximab in the autoimmunity and rituximab registry. *Arthritis Rheum* 2010;62:2625–32.
81. Tallantyre EC, Whittam DH, Paling D, *et al.* Secondary antibody deficiency and infection following B-cell depletion for CNS neuroinflammation. *J Neurol* 2018;265:1115–22.
82. Chakravarty EF, Murray ER, Kelman A, *et al.* Pregnancy outcomes after maternal exposure to rituximab. *Blood* 2011;117:1499–506.
83. Shosha E, Pittock SJ, Flanagan E, *et al.* Neuromyelitis optica spectrum disorders and pregnancy: interactions and management. *Mult Scler* 2017;23:1808–17.
84. Das G, Damotte V, Gelfand JM, *et al.* Rituximab before and during pregnancy: a systematic review, and a case series in MS and NMOSD. *Neurol Neuroimmunol Neuroinflamm* 2018;5:e453.
85. Hauser SL, Bar-Or A, Comi G, *et al.* Ocrelizumab versus interferon beta-1a in relapsing multiple sclerosis. *N Engl J Med Overseas Ed* 2017;376:221–34.
86. Montalban X, Hauser SL, Kappos L, *et al.* Ocrelizumab versus placebo in primary progressive multiple sclerosis. *N Engl J Med* 2017;376:209–20.
87. Emery P, Rigby W, Tak PP. Safety with ocrelizumab in rheumatoid arthritis: results from the ocrelizumab phase iii pty with Ocrelizumab in Rheumatoid Arthritis: Results from the Ocrelizumab Phase III Program. *PLoS One* 2014;9:87379.
88. Venhoff N, Effelsberg NM, Salzer U, *et al.* Impact of rituximab on immunoglobulin concentrations and B-cell

- numbers after cyclophosphamide treatment in patients with ANCA-associated vasculitides. *PLoS One* 2012;7:37626.
89. Jolles S, Chapel H, Litzman J. When to initiate immunoglobulin replacement therapy (IGRT) in antibody deficiency: a practical approach. *Clin Exp Immunol* 2017;188:333–41.
 90. Chua I, Lagos M, Charalambous BM, *et al.* Pathogen-specific IgG antibody levels in immunodeficient patients receiving immunoglobulin replacement do not provide additional benefit to therapeutic management over total serum IgG. *J Allergy Clin Immunol* 2011;127:1410–1.
 91. Wimperis J, Lunn M, Jones A, 2011. Department of health clinical guidelines for immunoglobulin use: second edition update. Available from: https://www.gov.uk/government/uploads/system/uploads/attachment_data/file/216671/dh_131107.pdf [Accessed Jul 2011].
 92. Witzel SJ. Lactation and the use of biologic immunosuppressive medications. *Breastfeed Med* 2014;9:543–6.
 93. Medicines and Healthcare products Regulatory Agency, 2013. Rituximab: screen for hepatitis B virus before treatment. MRHA Alert. Available from: <https://www.gov.uk/drug-safety-update/rituximab-screen-for-hepatitis-b-virus-before-treatment>
 94. Hwang JP, Lok AS. Management of patients with hepatitis B who require immunosuppressive therapy. *Nat Rev Gastroenterol Hepatol* 2014;11:209–19.
 95. Sagnelli E, Pisaturo M, Sagnelli C, *et al.* Rituximab-based treatment, HCV replication, and hepatic flares. *Clin Dev Immunol* 2012;2012:1–5.
 96. Lin KM, Lin JC, Tseng WY, *et al.* Rituximab-induced hepatitis C virus reactivation in rheumatoid arthritis. *J Microbiol Immunol Infect* 2013;46:65–7.
 97. Cantini F, Nannini C, Niccoli L, *et al.* Risk of tuberculosis reactivation in patients with rheumatoid arthritis, ankylosing spondylitis, and psoriatic arthritis receiving non-anti-TNF-targeted biologics. *Mediators Inflamm* 2017;2017:1–15.
 98. Buch MH, Smolen JS, Betteridge N, *et al.* Updated consensus statement on the use of rituximab in patients with rheumatoid arthritis. *Ann Rheum Dis* 2011;70:909–20.
 99. Bingham CO, Looney RJ, Deodhar A, *et al.* Immunization responses in rheumatoid arthritis patients treated with rituximab: results from a controlled clinical trial. *Arthritis Rheum* 2010;62:64–74.
 100. Kim W, Kim SH, Huh SY, *et al.* Reduced antibody formation after influenza vaccination in patients with neuromyelitis optica spectrum disorder treated with rituximab. *Eur J Neurol* 2013;20:975–80.
 101. Salmon JH, Cacoub P, Combe B, *et al.* Late-onset neutropenia after treatment with rituximab for rheumatoid arthritis and other autoimmune diseases: data from the AutoImmunity and Rituximab registry. *RMD Open* 2015;1:e000034.
 102. Seibert J, Blackburn J, Vollmer B. Safety, tolerability, and efficacy of rituximab in the treatment of multiple sclerosis: 285 patients treated in a single center. *Neurology* 2015;84.
 103. Plate A, Havla J, Kümpfel T. Late-onset neutropenia during long-term rituximab therapy in neuromyelitis optica. *Mult Scler Relat Disord* 2014;3:269–72.
 104. Mealy MA, Levy M. Favorable outcome of granulocyte colony-stimulating factor use in neuromyelitis optica patients presenting with agranulocytosis in the setting of rituximab. *J Neuroimmunol* 2015;287:29–30.
 105. Reitblat T, Wechsler A, Reitblat O. Rituximab-related late-onset neutropenia in patients with rheumatic diseases: successful re-challenge of the treatment. *Am J Case Rep* 2015;16:211–4.
 106. Zaheer F, Berger JR. Treatment-related progressive multifocal leukoencephalopathy: current understanding and future steps. *Ther Adv Drug Saf* 2012;3:227–39.